



PRODUCTS **EN**

[med]

MODULAR

MED 3250

- CAN, VAN, K-BUS, CODE AND ANALOG INTERFACE
- AUTO-SETTING AND TAMPERING-PROOF 4 HEAD ULTRASONIC SENSORS
- PIN CARD WITH PERSONAL CODE FOR EMERGENCY RELEASE (CUSTOMIZABLE)
- ORIGINAL REMOTE CONTROLLED
- CAMPER MODE
- INTEGRATED ENGINE CUT
- ANTI-CAR JACKING MODE
- SPEED ALERT
- MED 30 SERIES IMMOBILIZERS CONTROL



3250.CE

ALSO AVAILABLE IN THE FOLLOWING VERSIONS:

- MED 3250.CE:** With electronic override keys
- MED 3450:** With 2 head ultrasonic sensors
- MED 3450.CE:** With 2 head ultrasonic sensors and electronic override keys
- MED 3250.B:** No ultrasonic sensors

TYPE APPROVALS:

Directives 95/54/EC, 95/56/EC KBA (Germany)
MED 3450 VERSION: Security System Evaluation THATCHAM (UK)
 AA030503 SCM (Netherlands)

MED 7450.NA "PREMIUM"

- CAN, VAN, K-BUS, CODE AND ANALOG INTERFACE
- AUTO-SETTING AND TAMPERING-PROOF 2 HEAD ULTRASONIC SENSORS
- NO BATTERY BACK-UP SIREN
- PIN CARD WITH PERSONAL CODE FOR EMERGENCY RELEASE



7450.NA

- ORIGINAL REMOTE CONTROLLED
- OPTIONAL ELECTRONIC OVERRIDE KEYS

TYPE APPROVALS:

Directive 95/54/EC, 95/56/EC KBA (Germany)

MED 2250

- AUTO-SETTING AND TAMPERING-PROOF 4 HEAD ULTRASONIC SENSORS
- PIN CARD WITH PERSONAL CODE FOR EMERGENCY RELEASE (CUSTOMIZABLE)
- COUPLED WITH MED WATERPROOF (IP-67 CLASS) REMOTE CONTROLS
- CAMPER MODE
- INTEGRATED ENGINE CUT
- ANTI-CAR JACKING MODE
- SPEED ALERT
- UNIVERSAL CENTRAL DOOR LOCKING CONTROL
- MED 30 SERIES IMMOBILIZERS CONTROL



2250.CE

ALSO AVAILABLE IN THE FOLLOWING VERSIONS:

- MED 2250.CE:** With electronic override keys
- MED 2450:** With 2 head ultrasonic sensors
- MED 2450.CE:** With 2 head ultrasonic sensors and electronic override keys
- MED 2250.B:** No ultrasonic sensors

TYPE APPROVALS:

Directives 95/54/EC, 95/56/EC KBA (Germany)
MED 2450 VERSION: AA030503 SCM (Netherlands)

MED 6450.NA "PREMIUM"

- AUTO-SETTING AND TAMPERING-PROOF 2 HEAD ULTRASONIC SENSORS
- NO BATTERY BACK-UP SIREN
- PIN CARD WITH PERSONAL CODE FOR EMERGENCY RELEASE



6450.NA

- COUPLED WITH MED REMOTE CONTROLS
- UNIVERSAL CENTRAL DOOR LOCKING CONTROL

TYPE APPROVALS:

Directives 95/54/EC, 95/56/EC KBA (Germany)

COMPACT

MED 5000

- CAN, VAN, K-BUS, CODE AND ANALOG INTERFACE
- AUTO-SETTING AND TAMPERING-PROOF 2 HEAD ULTRASONIC SENSORS
- PIN CARD WITH PERSONAL CODE FOR EMERGENCY RELEASE
- ORIGINAL REMOTE CONTROLLED
- INTEGRATED ENGINE CUT



5000.CE

ALSO AVAILABLE IN THE FOLLOWING VERSIONS:

- MED 5000.CE:** With electronic override keys
- MED 5000.NA:** With no battery back-up siren
- MED 5000.B:** No ultrasonic sensors

TYPE APPROVALS:

Directives 95/54/EC, 95/56/EC KBA (Germany)
Security System Evaluation THATCHAM (UK)
AA030323 SCM (Netherlands)

MED 4000

- AUTO-SETTING AND TAMPERING-PROOF 2 HEAD ULTRASONIC SENSORS
- PIN CARD WITH PERSONAL CODE FOR EMERGENCY RELEASE
- COUPLED WITH MED WATERPROOF (IP-67 CLASS) REMOTE CONTROLS
- INTEGRATED ENGINE CUT
- UNIVERSAL CENTRAL DOOR LOCKING CONTROL



4000.CE

ALSO AVAILABLE IN THE FOLLOWING VERSIONS:

- MED 4000.CE:** With electronic override keys
- MED 4000.NA:** With no battery back-up siren

TYPE APPROVALS:

Directives 95/54/EC, 95/56/EC KBA (Germany)
AA030323 SCM (Netherlands)

DOOR LOCKING/UNLOCKING MODULE

MED LOCKER

- PC PROGRAMMABLE (BY MEANS OF KIT SK-U3 INTERFACE)
- "COMFORT" OUTPUT
- PIN CARD FOR REMOTE CONTROLS AUTO-LEARNING PROCEDURE
- COUPLED WITH MED REMOTE CONTROLS
- UNIVERSAL CENTRAL DOOR LOCKING CONTROL
- DIRECTION INDICATORS CONTROL
- ACTIVATION FOR SAT PROTECTION SYSTEMS



LOCKER

TYPE APPROVALS:

Directive 2006/28/EC KBA (Germany)

UNIVERSAL ANTI-CAR JACKING SYSTEM

MED GUARD

- 2 TX CARD TRANSMITTERS
- 2 DIGITAL OVERRIDE KEYS
- PROGRAMMABLE ANTI-CAR JACKING MODE
- ACTIVATION AND PROGRAMMING BY MEANS OF TX CARD
- ACTIVATION FOR SAT PROTECTION SYSTEMS



GUARD

ALSO AVAILABLE IN THE FOLLOWING VERSIONS:

- MED GUARD 2:** For 24 volt vehicles

TYPE APPROVALS:

Directive 95/54/EC BMVIT (Austria)

PARKING SENSORS

TOP PARKING 1,2,3,4

- ELECTRONIC CONTROL UNIT WITH AUTO-SETTING "DSM"
- 12/24 V POWER SUPPLY
- ADJUSTABLE AUDIO SIGNALING
- 4 "AMPLIFIED", BUILT-IN SENSORS
- HOLE DIAMETER 22 MM
- MINIMUM SENSED DISTANCE 30 CM

AVAILABLE VERSIONS:

- TOP PARKING 1: MATT-BLACK, 0° ANGLED SENSORS
- TOP PARKING 2: PAINTING COMPATIBLE, 0° ANGLED SENSORS
- TOP PARKING 3: MATT-BLACK, 7° ANGLED SENSORS
- TOP PARKING 4: PAINTING COMPATIBLE, 7° ANGLED SENSORS



ACCESSORIES:

DISPLAY TP1: Showing the active sensor and distance from the obstacle - universal fitting



DISPLAY TP2: Showing the active sensor and distance from the obstacle - to be fitted on the dashboard



ACT TP: Automatic activator for sensor fitting on the front side of the vehicle - analog odometric signal required

TOP PARKING 18,18A

- ELECTRONIC CONTROL UNIT WITH AUTO-SETTING "DSM"
- 12/24 V POWER SUPPLY
- ADJUSTABLE AUDIO SIGNALING
- 4 "SHORT", BUILT-IN SENSORS
- HOLE DIAMETER 18 MM
- MINIMUM SENSED DISTANCE 30 CM

AVAILABLE VERSIONS:

- TOP PARKING 18: MATT-BLACK/PAINTING COMPATIBLE, STRAIGHT SENSORS
- TOP PARKING 18A: MATT-BLACK/PAINTING COMPATIBLE, ANGLED SENSORS



ACCESSORIES:

DISPLAY TP1: Showing the active sensor and distance from the obstacle - universal fitting



DISPLAY TP2: Showing the active sensor and distance from the obstacle - to be fitted on the dashboard



ACT TP: Automatic activator for sensor fitting on the front side of the vehicle - analog odometric signal required

TOP PARKING B

- ELECTRONIC CONTROL UNIT WITH AUTO-SETTING "DSM"
- 12/24 V POWER SUPPLY
- ADJUSTABLE AUDIO SIGNALING
- 4 MATT-BLACK "SHORT" AND STRAIGHT BUILT-IN SENSORS
- HOLE DIAMETER 22 MM
- MINIMUM SENSED DISTANCE 30 CM



ACCESSORIES:

DISPLAY TP1: Showing the active sensor and distance from the obstacle - universal fitting



DISPLAY TP2: Showing the active sensor and distance from the obstacle - to be fitted on the dashboard



ACT TP: Automatic activator for sensor fitting on the front side of the vehicle - analog odometric signal required

PARKING E

- AUTO-SETTING ELECTRONIC CONTROL UNIT
- DISPLAY SHOWING THE ACTIVE SENSOR AND DISTANCE FROM THE OBSTACLE
- AUDIO SIGNALING
- 4 MATT-BLACK "SHORT" AND STRAIGHT BUILT-IN SENSORS
- HOLE DIAMETER 22 MM
- MINIMUM SENSED DISTANCE 50 CM



ACCESSORIES:

ACT TP: Automatic activator for sensor fitting on the front side of the vehicle - analog odometric signal required

TOP PARKING T FOR HEAVY-DUTY VEHICLES

- RESIN-BONDED ELECTRONIC CONTROL UNIT WITH AUTO-SETTING "DSM"
- 12/24 V POWER SUPPLY
- DISPLAY/BUZZER SHOWING THE ACTIVE SENSOR AND DISTANCE FROM THE OBSTACLE
- DISPLAY WITH 15 MT WIRE
- 4 "AMPLIFIED" SENSORS, "BODY FITTING"
- SUPPLIED WITH 7°, 11°, 15° ANGLED SHIMS
- MINIMUM SENSED DISTANCE 45 CM



IMMOBILIZERS

MED 310.1C UNIVERSAL USE

- INTEGRATED DOUBLE ENGINE CUT FROM MAIN UNIT
 - TAMPERING-PROOF AND IRREVERSIBLE HOOK-UP HARNESS
 - AUTOMATIC ENGINE CUT ARMING (PROGRAMMABLE)
 - SIGNALING LED
 - 2 SEALED ROLLING-CODE DIGITAL KEYS
 - POSSIBILITY OF ADDING UP TO 6 EXTRA KEYS
- LOST KEY CUT OUT / RESTORATION



310.1C

ALSO AVAILABLE IN THE FOLLOWING VERSIONS:
MED 310.2C: For 24 volt vehicles

TYPE APPROVALS:

Directives 95/54/EC, 95/56/EC KBA (Germany)

MED 310.1T UNIVERSAL USE

- (BACKLIT)KEYPAD CONTROLLED
 - INTEGRATED DOUBLE ENGINE CUT FROM MAIN UNIT
 - TAMPERING-PROOF AND IRREVERSIBLE HOOK-UP HARNESS
 - AUTOMATIC ENGINE CUT ARMING
 - SIGNALING LED
- CUSTOMIZABLE CODE



310.1T

TYPE APPROVALS:

Directives 95/54/EC, 95/56/EC KBA (Germany)

MED 330.1 UNIVERSAL USE

- MED 30.1 DIGITAL IMMOBILIZER FOR REMOTE FITTING, "CONVEYED WAVE" CONTROL OPTION
 - 1 ENGINE CUT FROM MAIN UNIT
 - TAMPERING-PROOF HARNESS
 - AUTOMATIC ENGINE CUT ARMING (PROGRAMMABLE)
 - SIGNALING LED
 - 2 SEALED ROLLING-CODE DIGITAL KEYS
 - POSSIBILITY OF ADDING UP TO 6 EXTRA KEYS
- FOR PETROL AND DIESEL VEHICLES WITH ELECTRIC FUEL PUMP
- LOST KEY CUT OUT / RESTORATION
- MED 30.1 IMMOBILIZER ALSO AVAILABLE IN COMBINATION WITH MED 3250 AND MED 2250 ALARMS



330.1

TYPE APPROVALS:

Directives 95/54/EC, 95/56/EC
Ministry of Transports and Navigation (Italy)

MED 330.2 FOR PETROL AND DIESEL VEHICLES WITH ELECTRIC FUEL PUMP DIPPED IN TANK

- MED 30.2 DIGITAL IMMOBILIZER, "CONVEYED WAVE" CONTROLLED, DIPPING COMPATIBLE
 - 1 ENGINE CUT FROM MAIN UNIT
 - FUEL TANK DIPPING, ON THE ELECTRIC FUEL PUMP
 - TAMPERING-PROOF HARNESS
 - AUTOMATIC ENGINE CUT ARMING (PROGRAMMABLE)
 - SIGNALING LED
 - 2 SEALED ROLLING-CODE DIGITAL KEYS
 - POSSIBILITY OF ADDING UP TO 6 EXTRA KEYS
- LOST KEY CUT OUT / RESTORATION
- MED 30.2 IMMOBILIZER ALSO AVAILABLE IN COMBINATION WITH MED 3250 AND MED 2250 ALARMS



330.2

TYPE APPROVALS:

Directives 95/54/EC, 95/56/EC
Ministry of Transports and Navigation (Italy)

SAT SYSTEM

MEDSKY UNITS

MS3

- ANTENNA AND DUAL BAND GSM MODULE
- ANTENNA AND GPS RECEIVER
- MOVEMENT AND LIFT SENSOR
- BATTERY BACK-UP
- 5 DIGITAL INPUTS
- 4 OUTPUTS (ENGINE CUT, SIREN, LED, ADDITIONAL MODULES)
- 12 OR 24 V POWER SUPPLY

- "DO IT YOURSELF" USE VIA SMS
- CONTROL CENTRE MONITORING
- OPTIONAL "IN CLEAR" LOCATION



MS3 V TX

ALSO AVAILABLE IN THE FOLLOWING VERSIONS:
MS3CAN, MS3TX, MS3V, MS3VCAN, MS3VTX,
MS3.1, MS3.1CAN, MS3.1TX

.1: With integrated SIM, managed via Control Centre only
CAN: Original remote controlled
TX: Active transponder controlled
V: Hands free kit

TYPE APPROVALS:
Directive 95/54/EC BMVIT (Austria)

MS5

- ANTENNA AND DUAL BAND GSM MODULE
- ANTENNA AND 16 CHANNEL GPS RECEIVER
- MOVEMENT AND LIFT SENSOR
- 3 DIGITAL INPUTS
- 1 OUTPUT FOR ENGINE CUT CONTROL
- 12 OR 24 V POWER SUPPLY

- "DO IT YOURSELF" USE VIA SMS
- CONTROL CENTRE MONITORING
- OPTIONAL "IN CLEAR" LOCATION



MS5 TX

ALSO AVAILABLE IN THE FOLLOWING VERSIONS:
MS5CAN, MS5TX, MS5.1, MS5.1CAN, MS5.1TX

.1: With integrated SIM, managed via Control Centre only
CAN: Original remote controlled
TX: Active transponder controlled

TYPE APPROVALS:
Directive 95/54/EC BMVIT (Austria)

MS1.2-DB

- DUAL BAND GSM MODULE
- ANTENNA AND 15 CHANNEL GPS RECEIVER
- MOVEMENT SENSOR
- BATTERY BACK-UP
- 8 DIGITAL INPUTS
- 4 OUTPUTS (ENGINE CUT, LED, 2 FOR ADDITIONAL MODULES)
- 12 OR 24 V POWER SUPPLY

- "DO IT YOURSELF USE" VIA SMS
- CONTROL CENTRE MONITORING
- OPTIONAL "IN CLEAR" LOCATION



MS1.2-DB

ALSO AVAILABLE IN THE FOLLOWING VERSIONS:
MS1-DB: Hands free kit
MS1 with freezer temperature sensor

TYPE APPROVALS:
Directive 95/54/EC BMVIT (Austria)

ACTIVATORS FOR SAT PROTECTION SYSTEMS

AS3

- PC PROGRAMMABLE (BY MEANS OF KIT SK-U3 INTERFACE)
- DIGITAL (CAN, VAN, K-BUS, CODE) AND ANALOG SIGNALS READOUT
- ORIGINAL REMOTE CONTROLLED
- DOORS, BONNET AND BOOT SIGNALS SENSING
- OUTPUTS CONFIGURATION
- SIGNALING LED



TYPE APPROVALS:

Directive 95/54/EC KBA (Germany)

AS4

- ACTIVE TRANSPONDER CONTROLLED
- 12/24 V POWER SUPPLY
- 868 MHZ FREQUENCY
- FM MODULATION



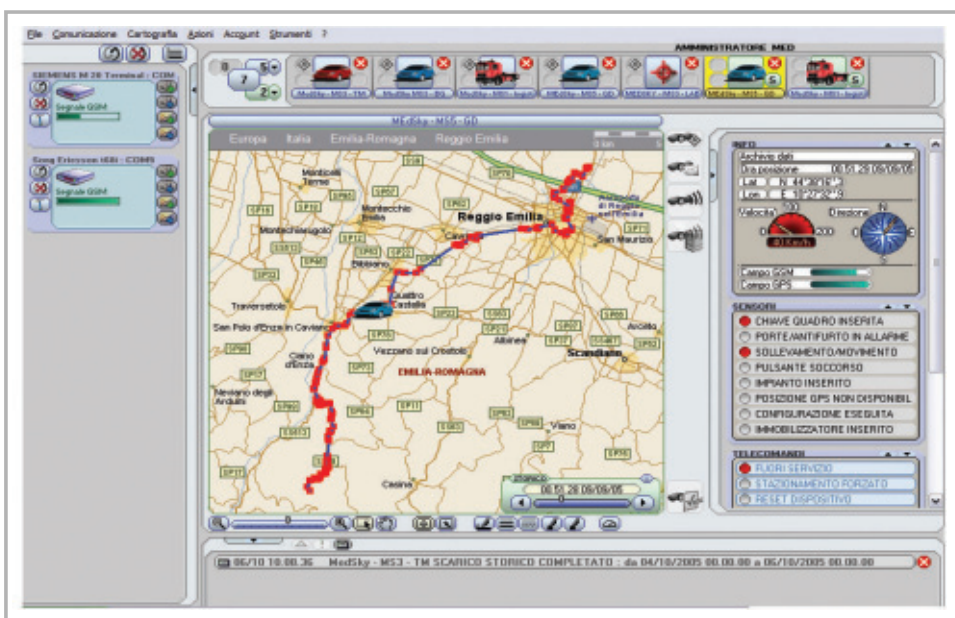
TYPE APPROVALS:

Directive 95/54/EC BMVIT (Austria)

SOFTWARE

MedSky CONTROL CENTRE

- PC MONITORING
- DIRECT CONNECTION TO THE VEHICLES VIA MODEM, GSM AND/OR GPRS
- FLEET MANAGEMENT, SURVEILLANCE, "DO IT YOURSELF" REPORTING
- ALARMS RECEPTION AND MANAGEMENT
- CONTROLS SENDING TO THE PERIPHERALS





med S.p.A. a socio unico.
Via Raffaello, 33 - 42100 Reggio Emilia - Italy
T. +39.0522.50.01.11 - F. +39.0522.51.46.10
www.medautomotive.it



977609441